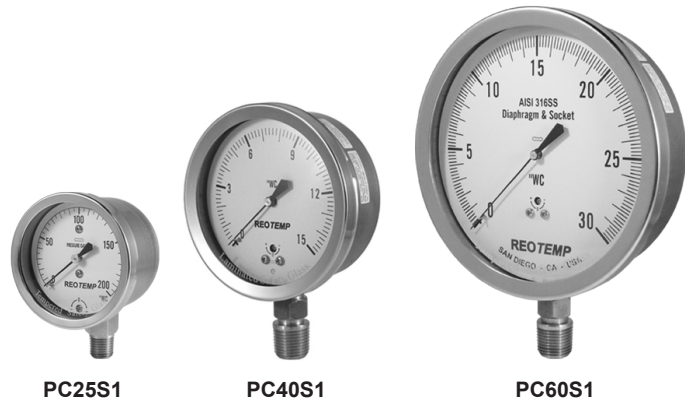


ALL STAINLESS STEEL LOW PRESSURE GAUGE

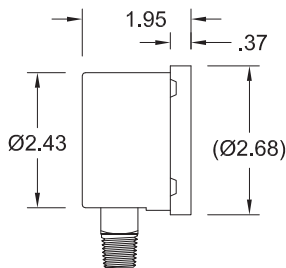
REOTEMP's Series PC low pressure gauges offer accurate and reliable measurements of gaseous media. Offered with stainless steel internals, the Series PC is designed to withstand corrosive media and ensure a long-lasting instrument.



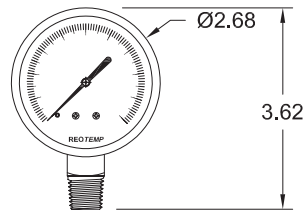
PC25S1

PC40S1

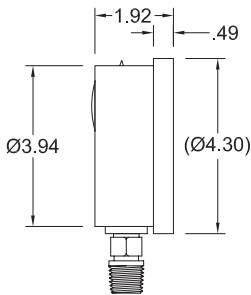
PC60S1



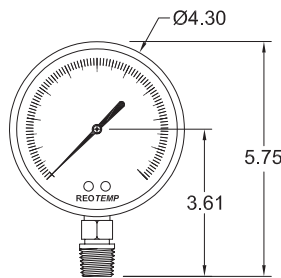
PC25S1



*dimensions in inches



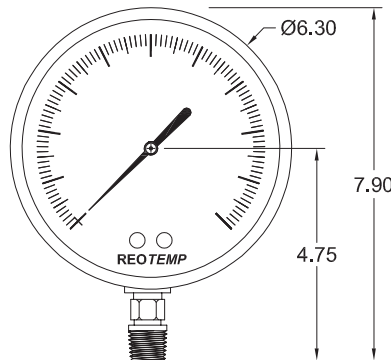
PC40S1



*dimensions in inches



PC60S1



*dimensions in inches



Dials



Custom Logo



Diaphragm Seal
Compatible

FEATURES / BENEFITS

- Sensitive Diaphragm/Capsule Mechanism
- All-Welded 316 Stainless Steel Capsule and Socket
- Easy-Access Zero Reset Screw on Dial



SPECIFICATIONS

Construction Materials:

Non Wetted

Case: 304SS

Ring: 304SS, Bayonet Twist-Off

Dial: White Aluminum, Black Letters

Wetted

Capsule: 316LSS

Socket: 316SS

Case-to-Socket

Screw Connection

Vented Case

Lens

Tempered Safety Glass (Standard), Plastic, or Laminated Safety Glass

Temperature Limits:

Ambient

-40°F ————— 150°F

Process

-40°F ————— 200°F

Process Temperature Limits When Assembled with a Diaphragm Seal

-60°F ————— 350°F

Direct Mount

-100°F ————— 750°F

Remote Mount or Cooling Tower

*Exact temperature limits will depend on diaphragm seal & fill fluid.

Accuracy: 2-1.6-2% Full Scale

Fillable: No

Restrictor Screw: Yes

Weight: 2.5" = 0.5 lbs

4" = 1.1 lbs

6" = 2.1 lbs

Maximum Working Pressure:

Stable = 100%

Momentary = 130% of scale

ALL STAINLESS STEEL LOW PRESSURE GAUGE



Visit reotemp.com

- ✓ Check Stock
- ✓ Get Price
- ✓ Configure Part #
- ✓ Download PDF Data Sheets

HOW TO ORDER: Choose options to build a part number. For example: **PC40S1A2P52-D-T-HV**

PC40	S	1	A	2	P52	-D	-T	-HV
DIAL SIZE	CASE TYPE	CAPSULE & SOCKET	MOUNT TYPE	CONNECTION	RANGE CODE	CASE FILL	LENS	ACCESSORIES
PC25 = 2.5"	S = 304SS Case & Bezel w/ Removable Bayonet, Zero Correction on Dial	1 = 316SS	A = Bottom B = Bottom/Rear Flange *C = Center Back *D = Center Back "U" Clamp *E = Center Back/Front Flange	4 = 1/4" NPT	<i>See Master Range Code Sheet on page 43</i> Common Ranges P50 = 0-10 in H ₂ O P51 = 0-15 in H ₂ O P52 = 0-30 in H ₂ O P53 = 0-60 in H ₂ O P54 = 0-100 in H ₂ O P55 = 0-160 in H ₂ O P56 = 0-200 in H ₂ O Available Ranges ■ 10" to 300" Water Column ■ Gauge Pressure, Vacuum, or Compound Standard Units ■ in H ₂ O Available Units ■ kPa ■ inHg ■ mbar ■ mmHg ■ psi ■ oz/in ² ■ mmH ₂ O & more	Case is Not Fillable -D = Dry	-T = Tempered Safety Glass (std) -P = Plastic -S = Laminated Safety Glass	-HV = Hi-Vis™ Dial -OX = Cleaned for O ₂ Service -C3 = 3 pt. Calibration Certificate -TS = Stainless Steel Tag -NC = NACE Compliance Certificate -CP = Positive Material Identification Certification -R5 = 1.5% Full Scale Accuracy (Not Available on Compound Ranges)
PC40 = 4" PC60 = 6"			A = Bottom B = Bottom/Rear Flange *C = Lower Back *E = Lower Back/Front Flange	4 = 1/4" NPT 2 = 1/2" NPT				

*Non-standard configuration

Diaphragm Seal Suitability Guide

Low pressure capsule gauges are very sensitive and require diaphragm seals with high fluid displacement. If a diaphragm seal is required to isolate the process fluid from the pressure gauge, the following seal model types are available for the Series PC.

Diaphragm Seal Model

High Displacement



Model	Total Gauge Span* (in H ₂ O)									
	10"	15"	20"	30"	40"	60"	100"	160"	200"	300"
W6	X	X	X	X	X	X	S	S	T	T
W7	X	X	X	S	S	T	T	T		
V5	X	S	S	T	T	T	T	T		
T6	X	X	X	X	X	S	S	S	S	S

*Total gauge span is additive of negative and positive pressures.
 Example: -15 - 0 - 30 psi = 45 psi span

- Assembly will function correctly with minimal accuracy degradation.
- T** Assembly will function correctly given stable process temperature.
- S** Assembly is highly sensitive to orientation and temperature variance. REOTEMP cannot guarantee a stated accuracy.
- X** Assembly will not work. The diaphragm does not displace enough fill fluid to drive the pressure gauge.