



LaseBVC – Bulk Volume Conveyor

Product module **CEWS Bulk Volume**



The application LaseBVC – Bulk Volume Conveyor is a highly precise two-dimensional measurement system especially developed for the measurement of materials on conveyor belt systems.

For the receipt of exact measurement data a scan area across the conveying direction of the belt is projected by a 2D laser scanner. A two-dimensional image of the bulk material will be generated and compared to a so called „0-profile“ which has been taken during the initial commissioning.

Out of the obtained data from the LASE CEWS application software calculates the volume flow of the material on a conveyor belt precisely – a simultaneous operation of even two conveyor systems is also possible. By the use of high-resolution laser scanners with a scan ratio of up to 300 scans per second the material can be recorded even at high transportation speeds. Special algorithms for the adjustment and calibration ensure high measurement accuracy. The system can be operated intuitively due to an user-oriented dialogue control and configuration wizards for a simple commissioning.

For an integration in production plants these common interfaces are already integrated: Ethernet TCP/IP, Profibus DP, Analog 0...20 mA and Serial RS 422.

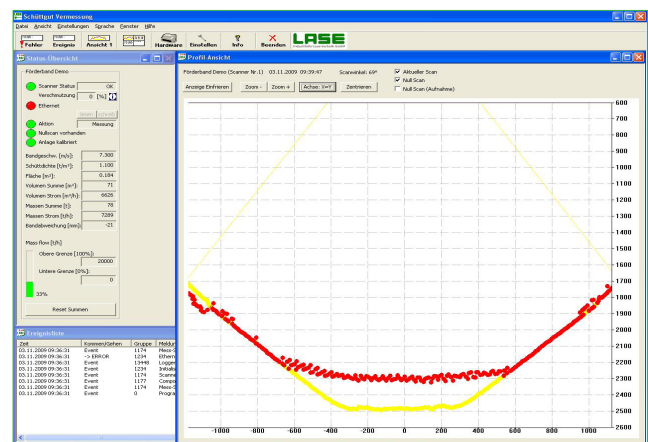
Because of its robust design this system allows a reliable operation even at raw environmental conditions. This specific software product derives from the product line CEWS Bulk Volume Module.

APPLICATIONS AND FEATURES:

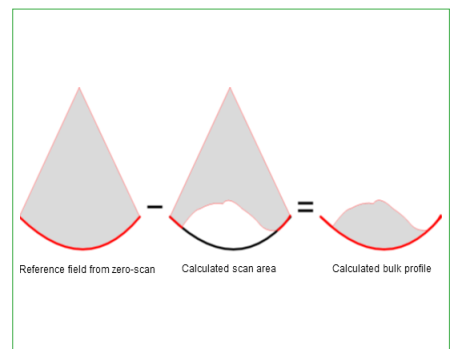
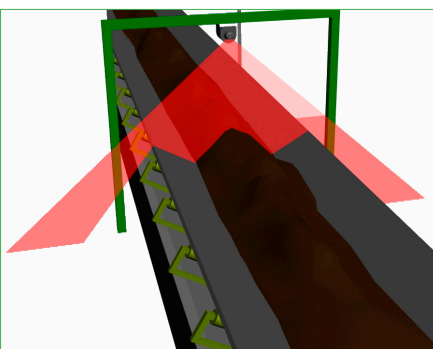
- Contactless 2D volume and mass flow measurement
- Simultaneous operation of up to four systems/conveyors
- Integrated monitoring and data analysis
- Sum counter for volume and mass flow rate
- Measurement of belt position movements

CUSTOMER BENEFITS:

- Exact volume determination by high-resolution laser scanners
- Maximising conveyor throughput
- Simple installation on mounting frame
- Reduced maintenance costs
- Increased service life of the conveyor



Function principle



LASE offers innovative and productive solutions by combining state-of-the-art laser hardware technology and sophisticated software applications. We deliver a broad range of precise and reliable 1D, 2D and 3D laser systems, which can be used for several measurement tasks.

We look to develop long-term relationships with our customers to drive projects forward and help improve safety and efficiency at a huge diversity of applications worldwide through working closely with them.

COMPETENCE, CREATIVITY AND PASSION lead us to be the ideal partner for your requirements. Convince yourselves of our broad portfolio of innovative products and solutions on our corporate website.

**Note:**

We reserve the right to proceed technical changes or modify the contents of this document without prior notice. LASE Industrielle Lasertechnik GmbH does not accept any responsibility whatsoever for potential errors or possible lack of information in this document. We reserve all rights in this document and in subject matter and illustrations contained herein. Any reproduction, disclosure to third parties or utilization of its contents - in whole or in part - is forbidden without prior written consent of LASE Industrielle Lasertechnik GmbH.

Contact**LASE Industrielle Lasertechnik GmbH**

Rudolf-Diesel-Str. 111
46485 Wesel

Telefon: +49 [0] 281 - 9 59 90 - 0
Fax: +49 [0] 281 - 9 59 90 - 111
E-Mail: info@lase.de
Website: www.lase.de

