


Great people.
Winning with value.
Fit for the future.

Welcome to GWF





GWF has called Lucerne home since 1899. Today, 120 years on, the inventive spirit and tenacity of central Switzerland are still part of our DNA.

“Our team works for your success.”

Urs Imholz, Managing Director GWF Switzerland

WELCOME TO GWF

GWF has manufactured innovative measurement solutions for valuable resources since 1899. Over the years, GWF has become an integral part of Lucerne, home of our headquarters. Like our hometown, we and our 250 employees are definitely not one of the "big players." However, like Lucerne—a small but internationally renowned town—we don't aim to impress you with our size. True to our corporate credo, "Great people; winning with value; fit for the future," we'd rather focus on team performance, sustainability and future-oriented solutions.

The following pages will introduce you to our company and some of our team. We would be delighted to take you on a guided tour of our R&D department, production facilities, test laboratories and engineering offices, and to demonstrate our willingness to go above and beyond in projects.

Feel free to visit us at one of our sites. We look forward to establishing a long-term partnership based on mutual trust.

The GWF family

Page 06 →	01	SUSTAINABILITY
Page 10 →	02	PORTFOLIO
Page 16 →	03	CUSTOMER SERVICE
Page 20 →	04	PRODUCTION
Page 24 →	05	DEVELOPMENT & INNOVATION
Page 28 →	06	GWF AS AN EMPLOYER

2 000 000

GWFcoders® produced annually

Our GWFencoder® technology is installed in millions of locations around the world every year. Leading utilities and system integrators put their trust in the reliable, battery-free mechatronic metering solution equipped with a serial interface.

24



Multicultural – 24 nationalities work at GWF

We are proud of our diversity and the numerous perspectives in our teams. As a Swiss family-owned company with a global reach, we stand for open-mindedness, inclusiveness, and cooperative spirit.

1. Lucerne/Switzerland

Headquarters with Sales, Production, R&D and Administration for the entire GWF range. Established in 1899.

2. Puidoux/Switzerland

Branch office for Sales and Customer Training in Western Switzerland. Established in 1990.

3. Kaufbeuren/Germany

Main site for GWF's acoustic flow measurement principles for large flow rates with Sales, Production, R&D and Administration. Established in 2018.

4. Hanover/Germany

R&D site for acoustic flow measurement principles. Established in 2018.

5. Thessaloniki/Greece

R&D site for software development. Established in 2018.

6. Bedford/United Kingdom

Sales and Service Center. Established in 2021.

7. Poznań/Poland

Sales and Service Center. Established in 2021.

8. Vienna/Austria

Sales and Service Center. Established in 2022.

9. USA/Florida

Sales and Service Center. Established in 2022.

Our employees use cutting-edge communication technologies at nine sites. Virtual team rooms and video conferencing are integral to our daily work.

9 sites

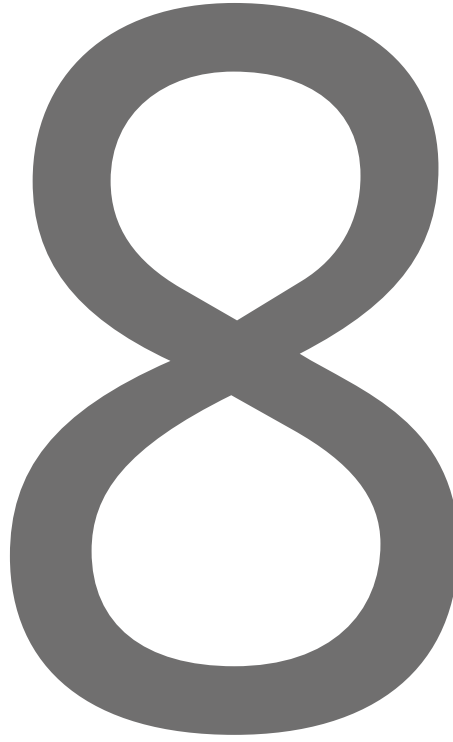
1899

GWF was established as 'Elster Apparatebau' in Lucerne in 1899. By the way, 'GWF' stands for Gas- und Wasser-messerfabrik (Gas and Water Meter Factory). The term 'Mess- Systeme' (Measurement Systems) was added to the name in the early 2000s.

Facts & figures

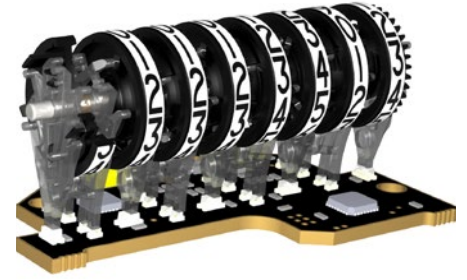
ISO 9001

Quality is a top priority at GWF. We consistently invest in quality management, external certifications and internal audits. Our fully independent quality team is self-sustainable, and its principles permeate the entire company along our processes and systems. We have summarized this in our proprietary working system GFWorX. GWF has always been a pioneer when it comes to external certifications—we were one of the first companies in our industry to receive a ISO 9001 certification in 1992.



rollers

GWFcoder® technology has been setting standards in quality and customer satisfaction for years. The mechatronic, high-resolution 8-roller meter is integrated in numerous water and gas meters of various manufacturers and, with its obvious customer benefits, still delivers strong sales in the age of fully electronic meters.



employees

Our employees are the key to our success. Without them, customer-oriented, innovative and sustainable further development of our company would be impossible. Besides attractive remuneration packages, we also offer our staff many additional benefits and long-term security of employment with opportunities to develop and progress.



GWF 4D technology®

Facts and figures are part of our daily work. As an innovative manufacturer of measurement systems, data veracity, data clarity and data communication are the crucial factors of success for our products.

GWF 4D technology is an innovative technology development that is patented worldwide. It is used for high-precision flow metering and consists of innovative ultrasonic signal processing, a highly robust mechanical design, high-per-

formance electronics and modular data communication. The SONICO® series combines all the elements of the GWF 4D technology in a single, high-precision freshwater meter.

A full-page photograph of a man and a woman jogging away from the camera on a gravel path. The woman is on the left, wearing a light green tank top and dark leggings. The man is on the right, wearing a grey t-shirt and dark shorts. They are running on a path that winds through a lush green landscape with scattered trees, some with yellow autumn foliage. In the background, there are rolling hills and mountains under a blue sky with wispy clouds. The overall scene is bright and positive, suggesting a healthy and sustainable lifestyle.

SUSTAINABILITY

Step-by-step
to a better future.



01

SUSTAINABILITY



“At GWF, we define sustainability holistically.”

Erich Flühler, Vice President Commercial Excellence

Our meters make a significant contribution to the responsible use of valuable resources and are characterised by their excellent ecological properties.

A blurred image of a document or brochure with the GWF logo in blue. The logo consists of the letters 'GWF' in a bold, sans-serif font. The background is out of focus, showing green leaves and a white surface.

GWF

Ensuring the effective use of valuable resources is a social challenge, and we make a significant contribution to this through our technologies. As a family-owned company that looks back on over 120 years of history, we do not think in terms of quarterly reports, but rather take a long-term approach. This way of thinking is reflected in our actions, because at GWF we are willing to invest money and effort in the sustainability of our company.

We strive for long-term partnerships that bring positive outcomes for all parties. To achieve this goal, we optimize our processes and invest in quality and performance. We focus on the total cost of ownership for our customers and partners when designing our solutions. And this focus enables us to develop a sustainable and value-driven business model.

With regard to our ecological footprint, we go well beyond the recycled paper used in this brochure. Our products are almost 100% recyclable and characterized by their excellent ecological properties, which we continue to optimize. This also includes areas like professional supplier management, to which we attach great importance, and efficient transport routes.

As an employer, we pride ourselves on providing a safe workplace for all of our people, from trained workers to postgraduate engineers. Diversity and inclusion are important to GWF as it allows us to bring together a wide range of perspectives. For decades, we have partnered with workshops for the disabled and reintegration programs, thereby making a valuable contribution to our community.



For many years, GWF has been committed to integrating workers into the primary labor market.



After many years of use in the field, GWF water meters are taken back and almost completely recycled.

PORTFOLIO

Delivering value
with passion.





We are experts in reliable acquisition, communication and processing of measurement data for billing and process management. Besides access to a wide-ranging technology and product portfolio, our customers have direct contacts who are able to help with every aspect of system integration. We also manage projects for our customers as general contractors and support them all the way from product selection to installation and commissioning.

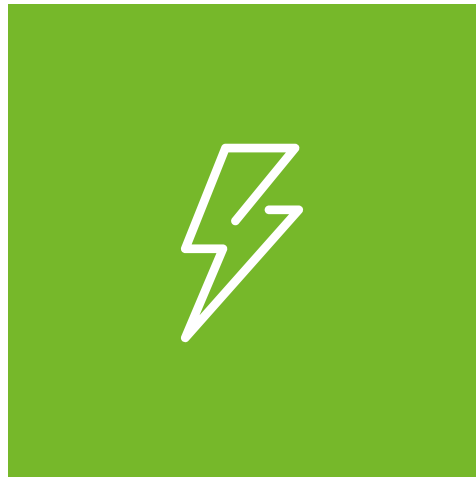
Gas

In addition to meters for billing purposes, GWF boasts a complete portfolio of mechatronic and fully electronic meters and regulators for all supply and distribution applications. GWF is also active in the field of building gas metering and regulating stations. The range of services includes constructing new facilities and overhauling and modernizing high and medium-pressure gas metering and regulating stations.



GWF is a trailblazer when it comes to implementing the Swiss Energy Strategy 2050 in electricity metering services. The meters we use not only meet all future regulatory requirements but can also be integrated into innovative overall systems. As a general contractor for smart meter roll-out projects, GWF is making a name for itself together with a number of established partner companies.

Electricity



Water

Our water-measurement systems are extremely versatile. From small supply lines measuring just 15 mm in diameter to determining the flow of 400-meter-wide rivers, GWF is ready with the products, advice and support you'll need. The technologies available include mechanical, mechatronic and fully electronic measurement methods. All smart products can be flexibly integrated into a customer's system landscape.



The district heating portfolio includes the supply of heat meters and calculation units as well as an array of services such as meter calibration. Additionally, we offer our customers support and assistance, helping them to design measurement points as well as to replace and commission meters.

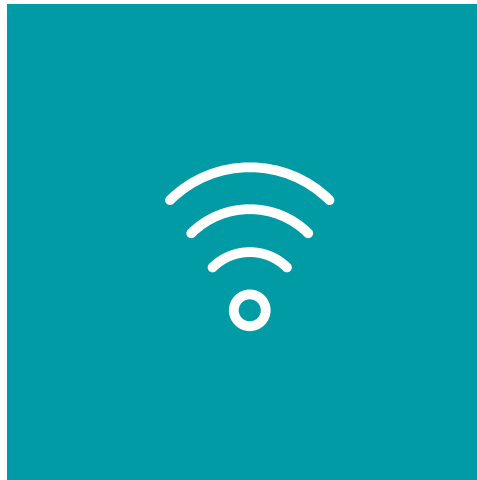
District heating

“Our portfolio goes well beyond standard products.”

Markus Neuhaus, Managing Director

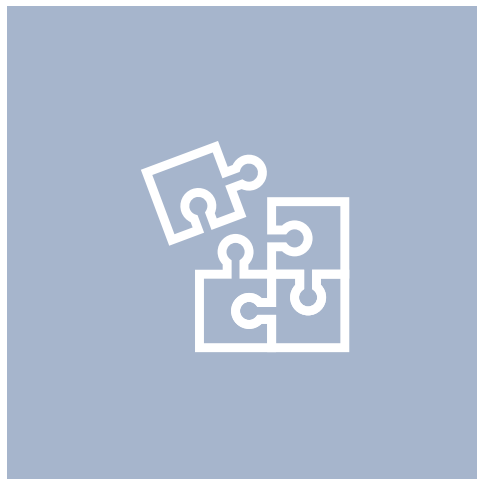
Building technology

The GWF range of services for building technologies comprises flow-distribution measurement and water and heat metering for billing purposes as well as an all-round worry-free service package from conception to commissioning and measurement point operation via our established partnerships.



IoT

Our IoT solutions impress customers with their high innovative capacity and robustness. GWF designs applications for measurement data collection and innovative, web-based consumption. In addition to these smart metering applications, GWF meters can also be seamlessly integrated into state-of-the-art smart city applications, as is the case with the LoRaWAN networks.



The GWF range of services covers the entire product life cycle from the conception of an appropriate solution to the recycling of old equipment. We're constantly expanding our range of product and customer-related services.

Services

Our versatile system products facilitate the easy integration of ready-to-use meters into all systems by means of open protocols and industry-standard interfaces. We're leaders in the field of system technology and are deeply involved in measurement and standardization committees.

System technology

OEM business

GWF has been active as a technology partner for large international manufacturers since the 1990s. We develop individual products and solutions and offer access to GWF's basic technologies. These are integrated into meters and communication modules, taking into account the respective national and application-specific requirements. From project management to industrialization, our engineers take responsibility for results instead of just activities.



The GWFcoder® register: our key technology for smart and durable gas and water meters.

The third generation of GWFcoder® technology scans 8 rollers and provides gallons or cubic feet resolution measurements. The proven GWFcoder® system reads the absolute mechanical meter reading precisely and reliably and outputs the recorded data via standardized interfaces. This functional principle has been patented by GWF and is already being used in millions of gas and water meters around the world. Compared to a meter with pulse output, the GWFcoder® interface has unprecedented data reliability, does not require programming in the field, and offers absolute readout reliability. Meters with GWFcoder® technology do not contain batteries, so the register does not determine the lifetime of the product. The energy for the readout is supplied by the readout device.

GWF 4D technology®

GWF 4D technology sets new standards for flow metering. The high-precision ultrasonic technology was developed on the basis of our extensive experience in the field of water flow measurement. We wanted to do things differently from the start. After analyzing a large number of basic technologies, we discovered time reversed acoustics (TRA) as an ultrasonic measurement principle. What we see today as GWF's 4D technology is the combination of our innovative 4-dimensional acoustic signal processing, high-performance electronic implementation, extremely robust mechanics, and a modular approach to data communication and system integration.

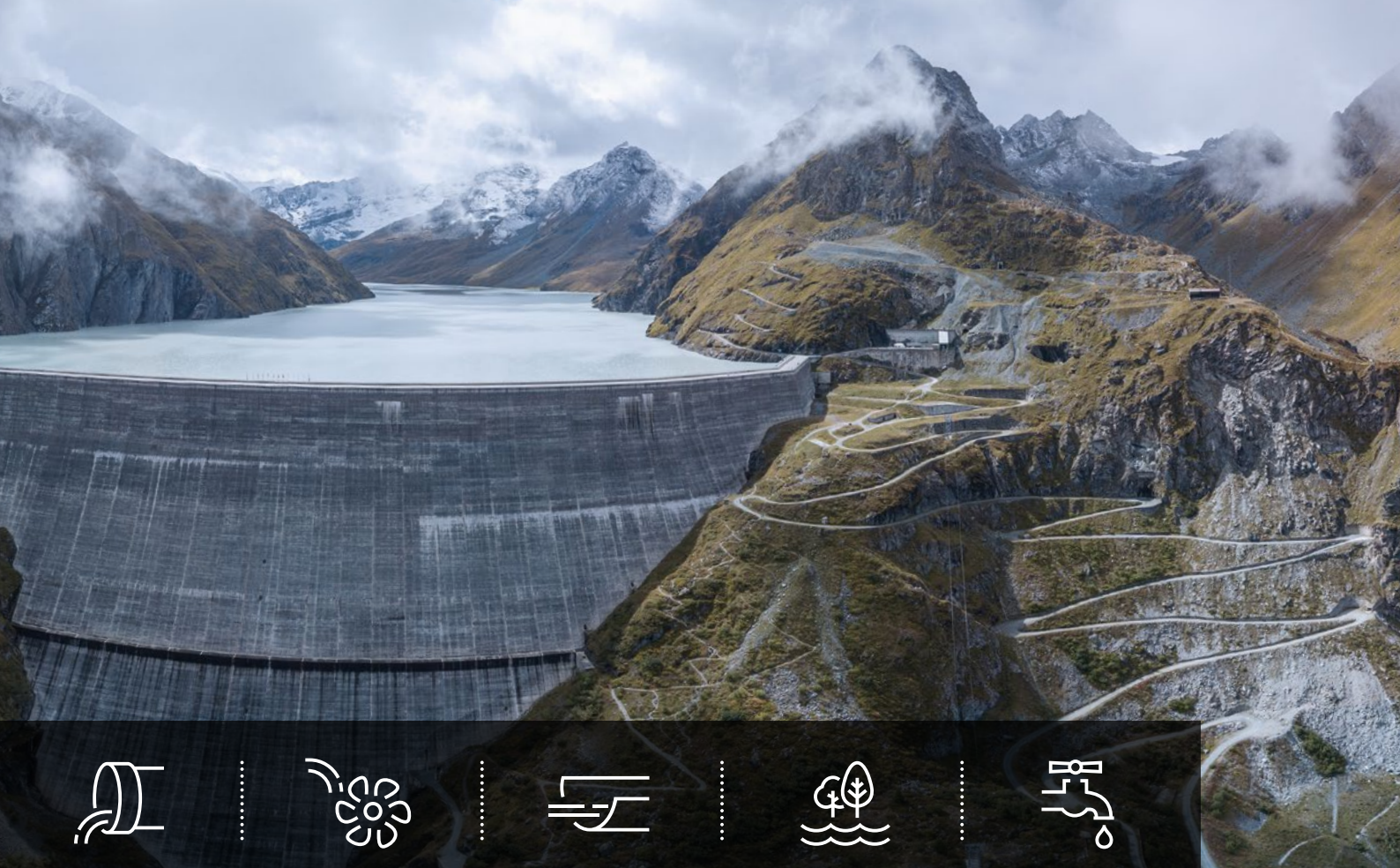


“We are proud to be the trusted technology partner for large manufacturers.”

Dr. Markus Helfenstein, EVP R&D

System business

Our high-quality measurement devices are an integral part of sophisticated metering and billing applications. The longevity and performance of our products support system integrators and SaaS providers to offer sustainable solutions.



Wastewater



Hydropower



Irrigation/Channels



Hydrology



Water Supply

Acoustic Flow Measurement

Flow measurement in large cross-sections is becoming increasingly important. Thanks to our physical measurement principles, time of flight and doppler, we are able to carry out measurements in rivers, channels, partially filled pipelines and pressurized lines. The areas of application are diverse: large irrigation projects are just as much a part of our services as projects in the fields of water treatment, hydropower and wastewater. Our portfolio also includes standard products for portable and stationary applications as well as services related to our innovative meters.



“When it comes to acoustic flow measurement, our technologies and know-how lead the way internationally.”

Dr. Jürgen Skripalle, CTO GWF Technologies

CUSTOMER SERVICE

Our customer
service leaves
an impression.





CUSTOMER SERVICE

03

03 CUSTOMER SERVICE

Our portfolio of customer services provides our customers with support and guidance throughout the entire product life cycle. Our engineers and service technicians offer expert advice – from choosing the right products and solutions to supporting system integration and performing installation, maintenance and overhauls. Needless to say, we actively support the recycling of old instruments.

Our plant construction skills complement our extensive service offering perfectly. The highly skilled team at GWF can assist with any new build projects or maintenance needs.



Our in-house service technicians are on call daily for our customers throughout Switzerland. For international business, we partner with highly trained distributors.



Our customer services are diverse. Contact us – we will be more than happy to help.





“Our portfolio of customer services continues to grow.”

Pius Fanger, Head Services

GWF has been involved in building gas metering and regulating stations since 2018. A fine example of how we are constantly on the lookout for opportunities that support our customers beyond our core business.

We have an ultra-modern infrastructure for overhauling products.



PRODUCTION

Fit for the future.

044



PRODUCTION

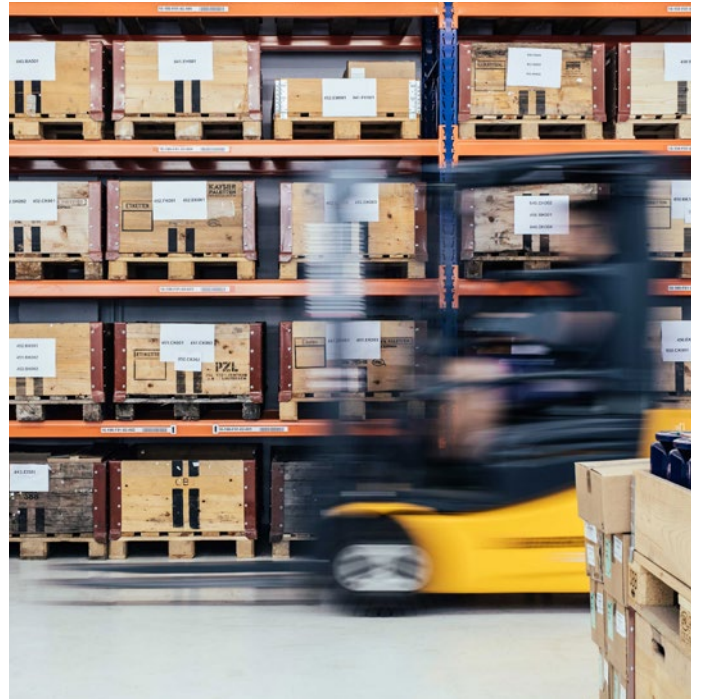
We have been manufacturing products at our site in Lucerne since 1899. In recent years, we have further developed and optimized our production processes, making the Lucerne site fully fit for the future.

All the mechanical and mechatronic water and heat meters manufactured by us are tested and verified on our test benches, which are accredited and monitored by METAS. Small-scale production of electronic components and bespoke gas and heat meters are also part of our value-added service in Lucerne.

In addition to Lucerne, we also have a site in Kaufbeuren (Germany) for manufacturing large-scale flow measurement products.

Since the late 1990s, we have been investing in professional, international supply chain management with partners in Europe and Asia. We choose our suppliers according to strict criteria and develop long-term and mutually beneficial relationships with them.

All our manufacturing processes and those of our suppliers are strictly audited and certified to ISO 9001. Our team of production engineers and quality managers is always looking for ways to optimize performance.



State-of-the-art logistics and warehouse processes ensure the best possible product availability and flexibility.





As a Swiss company, we pride ourselves on meeting the highest quality standards everywhere we work.



“We continue to optimize and further develop our processes.”

Andreas Sadek, Managing Director





DEVELOPMENT & INNOVATION

Staying ahead
through innovation.

DEVELOPMENT & INNOVATION



“We invest in innovation and have the freedom to try out new things.”

Thomas Frey, Head R&D NPI & Engineering

To offer our customers the greatest possible flexibility and investment protection, we work on the basis of open systems and standards, starting with the product development phase.





Mechatronics, electronics, firmware: three main fields of work of the GWF engineers in Lucerne, Kaufbeuren and Hanover.



GWF has been developing innovative software solutions for many years. In 2018, we established a company for the in-house development of apps and user software in Greece.

Our extensive technology portfolio ensures we are at home in the mechanical, mechatronic and fully electronic worlds of flow metering.

For this purpose, our R&D department combines numerous skills: from the development of robust mechanics, low-power electronics and firmware to the development of user interfaces and apps, our engineers deliver top performance. Our team works according to clearly structured processes with modern project management and digital collaboration tools.

The proven GWFcoder® technology is an example of our multi-disciplinary approach, which also includes industrialization via toolmaking and process automation. This is where we reap the benefits of our international partner network.

We also build on partnerships with companies and research institutions. As a result, we develop sustainable solutions, for example our communication modules according to OMS Wireless M-Bus or LoRaWAN standard.

“Digitalization strengthens our innovative capacity.”

Dr. Ioannis Fotiou, Managing Director



GWF AS AN EMPLOYER

Scaling heights together.

GWF AS AN EMPLOYER





GWF employees during a team building event on Lake Lucerne.

OUR TEAM: THE GWF FAMILY

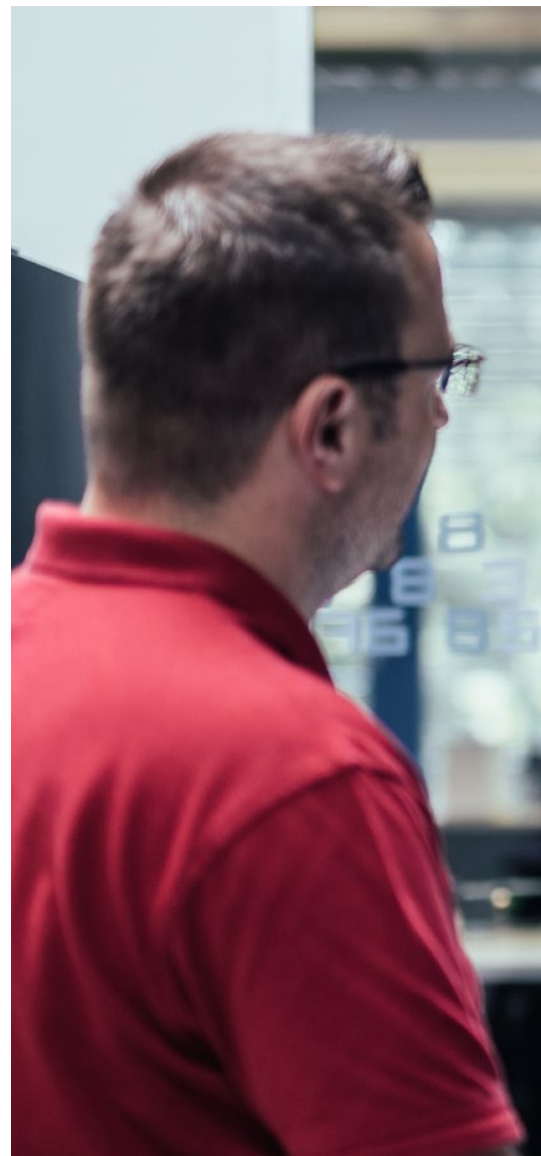
A challenging career and a friendly environment—how does that go together? Lively debates and cooperation based on mutual trust. Is that possible? Aren't Swiss tradition and international ambitions mutually contradictory? We believe they're interesting areas of creative tension that provide a context for innovation and professional growth. True to our first corporate goal, "Great people," we focus on team performance. In discussions, we distinguish between opinion and knowledge regardless of a person's position. Hierarchy is needed, but good cooperation, clear organizational structures, personal responsibility and customer orientation are even more important.

OUR VALUES – SWISS. SMART. SIMPLE.

We want our customers and colleagues to perceive us as Swiss, smart and simple: We stand for high quality, intelligent solutions and simple cooperation. Our values are an integral part of our recruitment process, appraisal interviews and career model.

CHALLENGE AND ENCOURAGE: FURTHER DEVELOPMENT@GWF

A company with a long-term vision must constantly improve. To do so, we need curious employees, and we need to actively support their learning. We offer language courses, specialist external training, and the opportunity for innovative thinking on the job. For example, "Seitenwechsel" (Changing Sides) is the name of the program that allows employees to spend a day getting to know other departments. Since 2019, we have had our own in-house management academy, where our executives experience shared learning experiences. Our Talent Program, which gives young (and the young-at-heart) high performers the opportunity to work on strategic projects, was also launched in 2019.





“Our employees
make the difference.”

Florian Strasser, President and Chairman

As a family-owned company and SME, we offer our employees long-term prospects and the opportunity to assume real responsibility.





Headquarter

GWF AG
Obergrundstrasse 119
6005 Lucerne, Switzerland

Sales Office Romandie

GWF AG
Z.I. de la Vulpillière 61b
1070 Puidoux, Switzerland

AFM Branch Kaufbeuren

GWF Technologies GmbH
Gewerbestraße 46f
87600 Kaufbeuren, Germany

R&D Branch Hanover

GWF Labs GmbH
Bernd-Rosemeyer-Str. 10
30880 Laatzen, Germany

R&D Branch Thessaloniki

GWF Labs MIKE
Ganas & Ganas Building
Thessaloniki 57001 Thermi, Greece

GWF Ltd

Studio 5, Capability House
Wrest Park, Silsoe,
Bedford, MK45 4HR, United Kingdom

Sales Department

GWF Sp. z o.o.
ul. Wybieg 7
61-315 Poznań, Poland

GWF Österreich GmbH

Felberstrasse 80
1150 Wien, Austria

GWF USA, INC.

P.O. Box 772817
Ocala, Florida 34477

© GWF AG

Specifications are for instruments at the time the literature was printed. All specifications are subject to change, without prior notice, for the sake of continuous product testing and improvement.

04/2023 – Kleus90100



printed on
Image Impact Preprint

printed in
switzerland



→ gwf.ch

